

oakheart

£1,350 Per Month

Per Month

Drumlin Drive, Creeping St. Mary



A high specification, two-bedroom detached bungalow which is situated in the brand new 'Alder Meadow' development by Redbourne Homes. Located in a small village, nestled in the heart of Suffolk, it is conveniently placed between the A14 and the A140, providing easy access to the town of Ipswich and the nearby cities of Cambridge and Norwich. The local train station is a mere 7-minute drive away in the small town of Needham Market,

with trains to London taking roughly 1 hour 20 minutes. The second closest station is a 10-minute drive in the opposite direction in the nearby town of Stowmarket.

The accommodation features a stylish fitted kitchen with a range of AEG/Lamona appliances, the kitchen sits within a large open plan living space with plenty of room to entertain and with double doors leading out to the rear

garden. There are two double bedrooms and a modern shower room with a walk-in shower. Externally there is an enclosed rear garden and off-road parking on the driveway and within the garage.

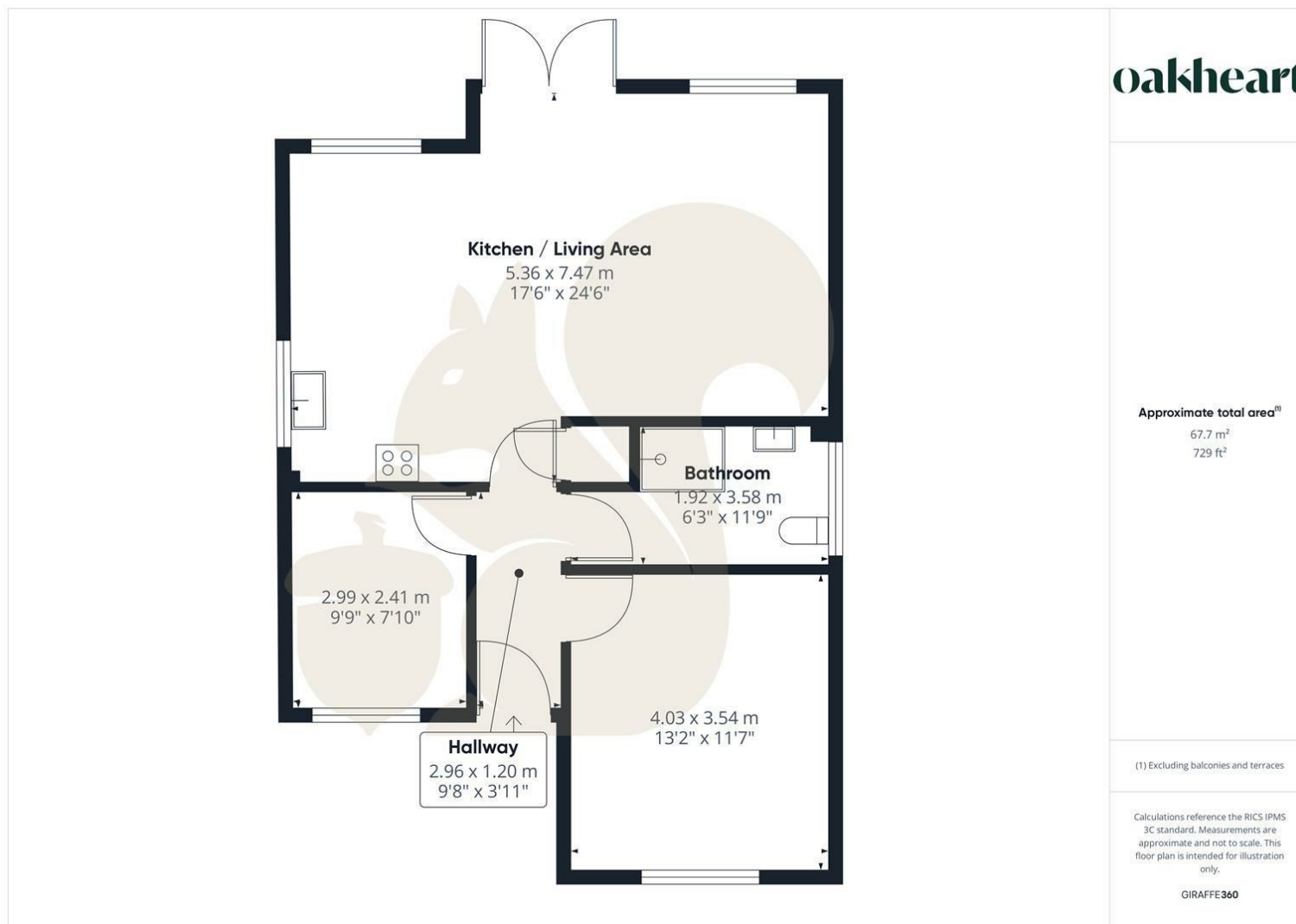
PLEASE NOTE the photos shown are photos of the show Bungalow. The property is offered unfurnished and is available now. Call the Oakheart lettings team for further information.







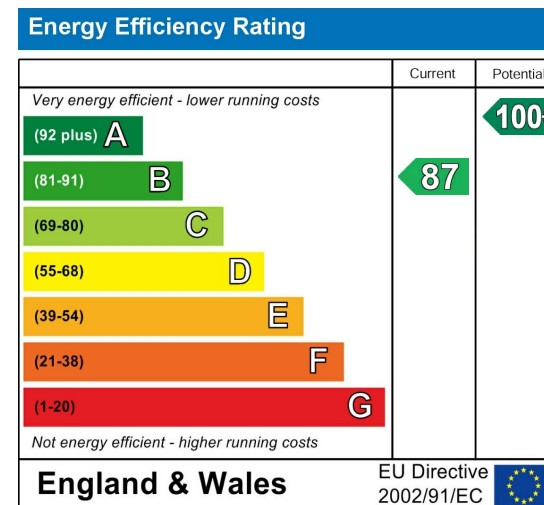




Local Authority:

Tenure:

Council Tax Band:
New Build



Agents Note: Whilst every care has been taken to prepare these particulars, they are for guidance purposes only. All measurements are approximate and are for general guidance purposes only and whilst every care has been taken to ensure their accuracy, they should not be relied upon.

Oakheart Colchester - Lettings
01206 803 303
essexlettings@oakheart.co.uk
2b Cotman Road, Colchester, Essex, CO3 4QJ

oakheart